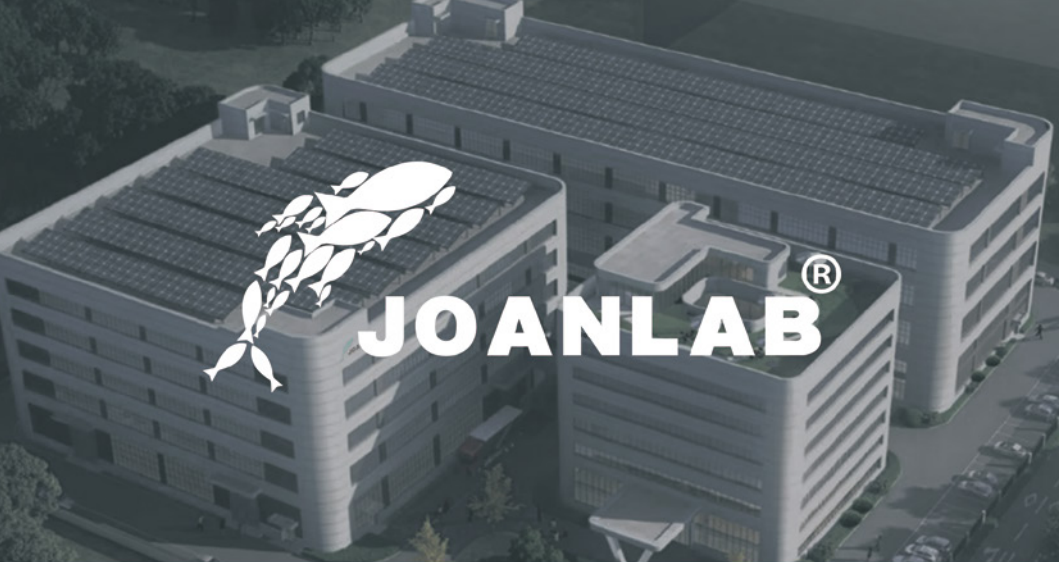


MAKE EVERY EXPERIMENT  
MORE CONVENIENT

Joan Lab Equipment (Zhejiang) Co.,Ltd.



## HISTORY

---

**2010年**

Established Ningbo Joan Lab Equipment Co., Ltd.( Mainly Export laboratory instrument)

**2013年**

Set up own brand "JOANLAB"

**2015年**

Introduced German production technology, set up production factory in Huzhou

**2019年**

Set up a research and development center in Hangzhou, developed mixing, centrifuge, thermostat, pipetting series of new products

**2022年**

100 million in sales

**2023年**

Expand the production scale and invest in the construction of 35,000 square meters new factory

# CONTENTS

## HISTORY



### 01 SHAKER&MIXER

---

Mini Vortex Mixer	04	Vortex Mixer With Multifunction	05
Roller Mixer	07	Roller Mixer	08
Roller Mixer	09	Long axis Rotating Mixer Shaker	10
Rotary Rotating Mixer Shaker	11	Microplate oscillator	12
Microplate oscillator	13	Multi Tube Vortex Mixer	14
Multi Tube Vortex Mixer	15	Orbital Shaker	16
3D Oscillator Shaker	17		



### 02 LAB CENTRIFUGE

---

Mini Centrifuge	19	Mini Centrifuge	20
Digital Mini Centrifuge	21	High Speed Centrifuge	22
High Speed Centrifuge	23	Low Speed Centrifuge	24
Low Speed Centrifuge	25		



### 03 MICROPLATE CENTRIFUGE

---

Microplate Centrifuge	27
-----------------------	----



### 04 LAB STIRRER

---

Mini Magnetic Stirrer	29	Heating Magnetic Stirrer	30
Digital Display Hotplate Stirrer	31	Digital Display Hotplate Stirrer	32
Large Capacity Magnetic Stirrer	33	Large Capacity Magnetic Stirrer	34
Multiple Magnetic Stirrer	35	Multiple Magnetic Stirrer with Heating	36
Overhead Stirrer	37		



## 05 DRY BATH

---

Mini Dry Bath	39	Dry Bath	41
Dry Bath - Two Modules	43	Dry Bath Shaking Incubator	45



## 06 WATER BATH

---

Water Bath With Magnetic Stirrer	48	Water Bath	49
----------------------------------	----	------------	----



## 07 HEATING MANTLE

---

Heating Mantle	51
----------------	----



## 08 INFRARED STERILIZER

---

Infrared Sterilizer	53
---------------------	----



## 09 MICROPIPETTE

---

Electric Pipette	55	Liquid Vacuum Aspiration System	56
Bottle Top Dispenser	57	M Series Micropipette	58
P Series Micropipette	59	Multichannel Pipette	60



## 10 VACUUM PUMP

---

Oilless Diaphragm Vacuum Pump	62	Adjustable Speed Oil-free Diaphragm Vacuum Pump	63
Oilless Diaphragm Vacuum Pump - 30L	64	6L Mini Vacuum Pump	65
Vacuum Filtration Apparatus	66		



## 11 BALANCE SCALE

---

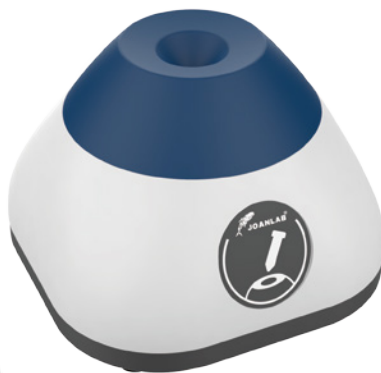
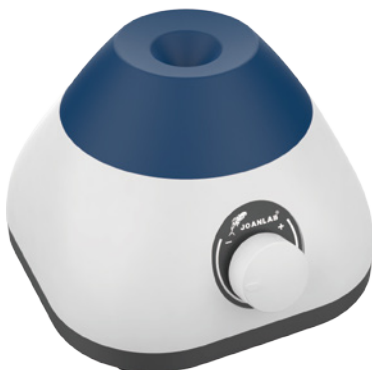
Square Pan Balance	68	Round Pan Balance	69
0.001g Balance	70	Analytical Balance - FA	71

# SHAKER&MIXER

---



## Mini Vortex Mixer



Stepless speed regulation  
Wide speed range



High quality and colorful  
silicone



Press to start / Compact body

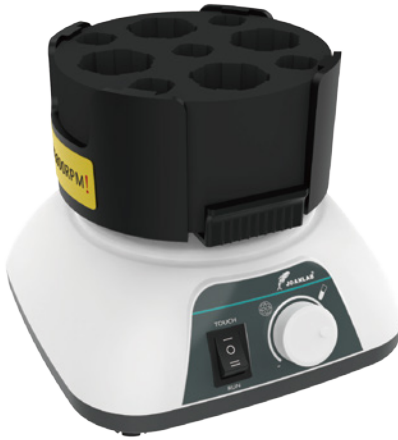


Brushless motor / Durable

### TECHNICAL DATA

Model	VM-300	VM-300S	Shell Protection Level	IP42	
Control Mode	Constant speed	Knob	Power	12W	
Motor	Brushless motor		Voltage	100-240V, 50/60Hz	
Amplitude	4.5mm (Circular oscillation)		Product Size	93*93*72mm	100*93*72mm
Maximum Sample Processing Capacity	50ml		Allowable Ambient Temperature	5-40°C, 80%RH	
Speed Range	3000rpm	0-3000rpm	Gross / Net weight	0.55/0.36kg	0.56/0.37kg

## Vortex Mixer With Multifunction



Ultra-low body, stable operation



Various fixtures, large handling capacity



Brushless motor with strong power



Touch / Run, easy to switch

### TECHNICAL DATA

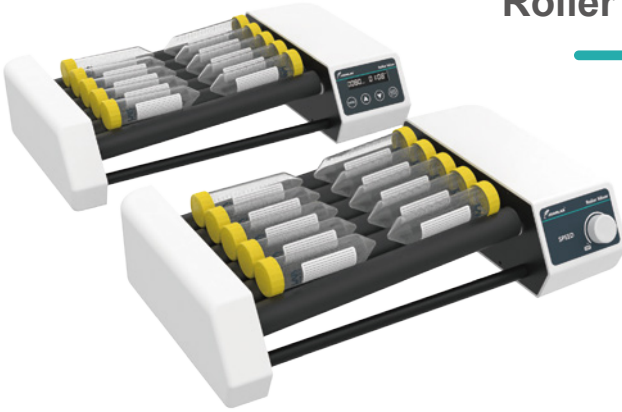
Model	VM-500S	VM-500Pro	Speed Range	Touch: 0-3000rpm Run: 200-3000rpm	Touch: 0-3000rpm Run: 100-3000rpm
Operating Mode	Touch / Run		Timing / Time	No	1min - 8h
Control Mode	Knob	Digital display & Button	Shell Protection Level	IP21	
Display	No	LCD	Voltage	20W	
Motor	Brushless motor		Power	AC 100-240V / DC12V	
Amplitude	4.5mm (Circular oscillation)		Temperature	5-40 C, 80%RH	
Max Capacity	50ml*4, 15ml*9, 5/10ml*12, 2ml*24				

## Multifunctional Mixer Adapted Module

Model	Picture	Image	Module application scope
VM501			Centrifuge tube / Test tube
VM502			Flask / Multi tube
VM503			Φ12mm Blood collection tube * 21
VM504			5ml/ 15ml Centrifuge tube * 12
VM505			50ml Centrifuge tube * 4 5ml/ 15ml Centrifuge tube * 5
VM506			0.2ml Centrifuge tube * 96 96 well plate
VM507			0.5ml Centrifuge tube * 20 1.5 / 2.0ml Centrifuge tube * 30
VM508			Cell culture plate



## Roller Mixer



Timing function



Anti - lock design, more convenient



Adjustable speed

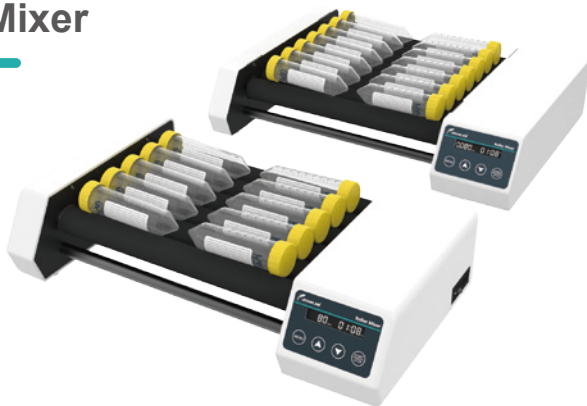


Brushless motor with strong power

### TECHNICAL DATA

Model	RM-6	RM-6Pro	RM-8Pro
Motor Type	Brush motor	Brushless motor	Brushless motor
Display	/	LCD	LCD
Speed	20 - 80rpm		
Number Of Rollers	6	6	8
Roller Length (mm)	280		
Roller Center Distance (mm)	34		
SPECS	φ 6 - 34mm		
Timing	/	1min - 23h59min	1min - 23h59min
Allowed Ambient Humidity Temp.	5 ~ 40 C 80%RH		
Voltage	AC 100 - 220V, 50/60Hz		
Power	25W		
Dimension (mm)	440*255*105	440*255*105	430*320*100

## Roller Mixer



Timing function



Anti - lock design, more convenient



Adjustable speed

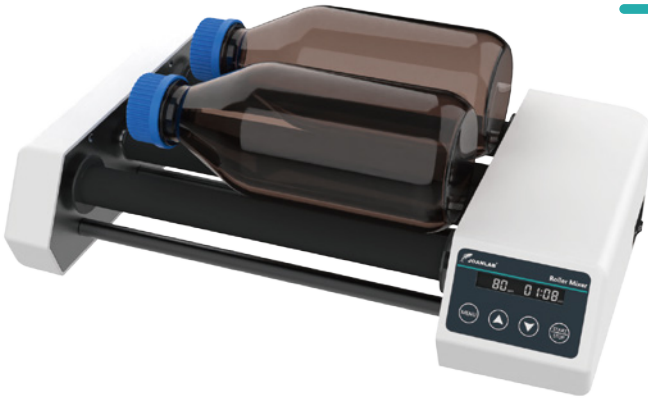


Brushless motor with strong power

### TECHNICAL DATA

Model	RM-6H	RM-8H
Motor Type	Brushless motor	
Display	LCD	
Type	Horizontal rolling	
Speed	20 - 80rpm	
Number Of Rollers	6	8
Roller Length (mm)	280	
Roller Center Distance (mm)	34	
SPECS	φ 6 - 34mm	
Timing	1min - 23h59min	
Allowed Ambient Humidity Temp.	5 ~ 40 C 80%RH	
Voltage	AC 100 - 220V, 50/60Hz	
Power	25W	
Dimension (mm)	440*255*105	430*320*100

## Roller Mixer



Timing function



Anti - lock design, more convenient



Adjustable speed



Brushless motor with strong power

### TECHNICAL DATA

Model	RM-4max
Motor Type	Brushless motor
Type	Horizontal rolling
Speed	20 - 80rpm
Number Of Rollers	4
Roller Length (mm)	280
Roller Center Distance (mm)	68
SPECS	φ 45 - 100mm
Timing	1min - 23h59min
Allowed Ambient Humidity Temp.	5 ~ 40 C 80%RH
Voltage	AC 100 - 220V, 50/60Hz
Power	25W
Dimension (mm)	440*255*105

# Long Axis Rotating Mixer Shaker



Timing function



Six different modules

## TECHNICAL DATA

Model	RML - 80	RML - 80Pro
Motor	Brush motor	Brushless motor
Control Mode	Knob	Digital display & Button
Type	Non-stop run	Non-stop run / Timing
Speed	20 - 80rpm	
Timing	/	1min - 23h59min
Power	25W	
Dimension (mm)	425*100*125	

## MODULES



Composite module

Centrifuge tube : 50ml\*4+15ml\*10+2ml\*8  
 Blood collection tube : 10ml\*10+2/5ml\*8



RML-801

Centrifuge tube : 50ml\*12



RML-802

Centrifuge tube : 15ml\*23  
 Blood collection tube : 10ml\*23



RML-803

Centrifuge tube : 1.5/2.0ml\*28  
 Blood collection tube : 2.0/5.0ml\*28



RML-804

Centrifuge tube : 15ml\*16  
 Blood collection tube : 10ml\*16



RML-805

Centrifuge tube : 50ml\*12

## Rotary Rotating Mixer Shaker



Timing function



Large handling capacity



Adjustable angle



Brushless motor with strong power

### TECHNICAL DATA

Model	RMO - 80	RMO - 80Pro
Motor	Brush motor	Brushless motor
Control Mode	Knob	Digital display & Button
Type	Non-stop run	Non-stop run / Timing
Speed	20 - 80rpm	
Angle Range	40° - 80°	
SPECS	Centrifuge tube : 50ml*8 or 15ml*6 or 1.5ml/2ml*24 Blood collection tube : 10ml*6 or 2ml/5ml*24	
Timing	/	1min - 23h59min
Allowed Ambient Humidity Temp.	5 ~ 40 C 80%RH	
Voltage	AC 100 - 220V, 50/60Hz	
Power	25W	
Dimension (mm)	440*255*102	

## Microplate oscillator



Timing function

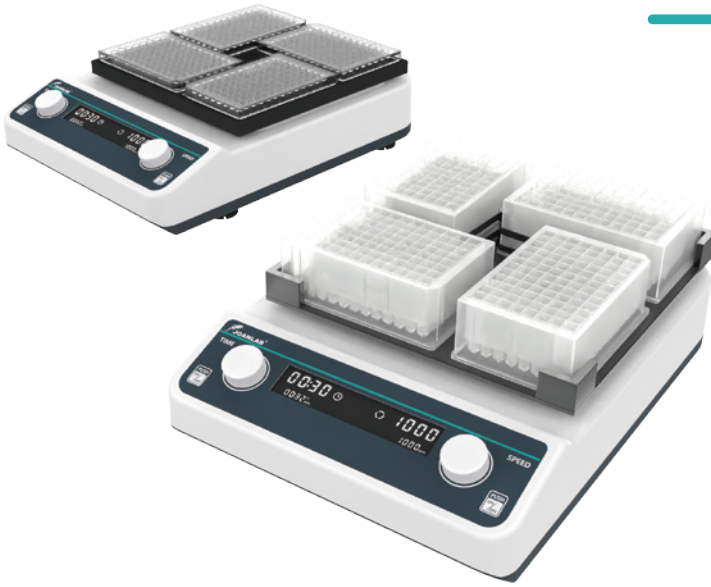


Brushless motor with strong power

### TECHNICAL DATA

Model	VM - 500 - 1P	VM - 500 - 2P
Motor Type	Brushless motor	
Horizontal Gyration Amplitude	4mm	
Speed	100-1200rpm	
RPM Increment	10rpm	
Timing	1min - 8h	
Handling range	ELISA Plate / Tissue Culture Plate / 96-well plate	
Allowed Ambient Humidity Temp.	5 ~ 40 C 80%RH	
Voltage	AC 100 - 240V, 50/60Hz	
Power	20W	
Dimension (mm)	155*150*90	180*150*90

## Microplate oscillator



Timing function



Brushless motor with strong power

### TECHNICAL DATA

Model	VM - 600	VM - 600D
Motor Type	Brushless motor	
Horizontal Gyration Amplitude	3mm	
Speed	500 - 1200rpm	
RPM Increment	10rpm	
Timing	1min - 8h	
Handling Range	ELISA Plate/Tissue Culture Plate *4	ELISA Plate/Deep Tissue Culture Plate *4
Allowed Ambient Humidity Temp.	5 ~ 40℃ 80%RH	
Voltage	AC 110 - 220V	
Power	20W	
Dimension (mm)	355*260*95	355*260*105

## Multi Tube Vortex Mixer



Timing function



Large handling capacity

### TECHNICAL DATA

Model	VM - 600Max
Motor Type	Brushless motor
Horizontal Gyration Amplitude	4mm
Speed	1500 - 3000rpm
RPM Increment	10rpm
Timing	1min - 8h
Handling Range	<p>Model1(VM601) Centrifuge tube : 50ml*25+15ml*16</p> <p>Model2(VM602) Centrifuge tube : 15ml*49 / Blood tube :10ml*49</p> <p>Model3(VM603) Blood tube : 2/5ml*49</p> <p>Model4(VM604) Centrifuge tube : 1.5/2ml*81</p>
Allowed Ambient Humidity Temp.	5 ~ 40 C 80%RH
Voltage	AC 100 - 220V, 50/60Hz
Power	30W
Dimension (mm)	355*260*145



## Multi Tube Vortex Mixer



Smooth start, stable operation



Large handling capacity



Brushless motor with strong power



Touch / Run, easy to switch

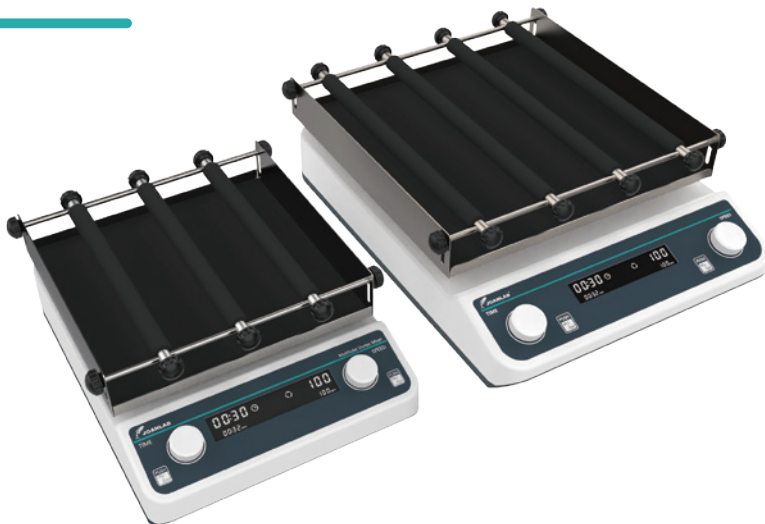
### TECHNICAL DATA

Model	VM800
Operating Mode	Touch / Run
Speed Range	500 ~ 2800rpm
Amplitude	4mm Horizontal swing
Time Range	1min ~ 99h59min
Maximum Load	4.5kg
Power	100W

### ADAPTATION MODULE DETAILS

Model	Specs	Model
VM801	50* $\phi$ 10mm	$\phi$ 9 ~ $\phi$ 10mm
VM802 (Standard)	50* $\phi$ 12mm	$\phi$ 11 ~ $\phi$ 13 mm (1.5/2ml centrifuge tube)
VM803 (Standard)	50* $\phi$ 15mm	$\phi$ 14 ~ $\phi$ 17mm (5/15ml centrifuge tube)
VM804	50* $\phi$ 20mm	$\phi$ 18 ~ $\phi$ 21mm
VM805	15* $\phi$ 25mm	$\phi$ 24 ~ $\phi$ 27mm
VM806 标配(Standard)	15* $\phi$ 29mm	$\phi$ 28 ~ $\phi$ 32 mm (50ml centrifuge tube)

## Orbital Shaker



Adjustable speed



Timing function

### TECHNICAL DATA

Model	OS-20Pro	OS-40Pro	LS-40Pro
Speed	40-200rpm		
Plate Size	250*250mm	320*320mm	320*320mm
Orbit Diameter	20mm	20mm	Linear and reciprocating 20mm
Timing Range	1min-23h59min		
Maximum Load	2kg	5kg	5kg
Voltage	AC100-240V 50/60Hz		
Dimensions	260*355*135mm	330*435*140mm	340*435*140mm

## 3D Oscillator Shaker



Timing function



Suitable for a variety of containers



Adjustable speed



3D mixing

### TECHNICAL DATA

Model	SK - 3D
Type	3D Oscillating
Display	LCD
Tilt Angle	10°
Max Load	0.8kg
Speed	10 - 80rpm
Timing	1min - 8h
Allowed Ambient Humidity Temp.	5 ~ 40 C 80%RH
Voltage	AC 100 - 240V, 50/60Hz
Power	10W
Dimension (mm)	184*184*130

# CENTRIFUGE

---



## Mini Centrifuge



Stop running after opening lid



Low noise

### TECHNICAL DATA

Model	MC-4K	MC-7K	MC-10K	MC-12K
Max Speed	4000rpm	7000rpm	10000rpm	12000rpm
Max RCF	980xg	3010xg	6149xg	8855xg
Rotor Capacity	0.2ml*16 + 1.5 / 2.0ml*8		1.5 / 2.0ml*8	
Power	15W	20W	30W	40W
Dimensions (mm)	160*135*110	160*135*110	160*135*110	160*135*110
Weight (kg)	0.8	0.8	0.8	0.8

## Mini Centrifuge



Multi-rotor, more working capacity



Low centre of gravity for stable operation



High frequency and wide voltage



Low noise

### TECHNICAL DATA

Model	MC-4S	MC-7S	MC-4/7S
Control Mode	Constant speed		
Max Relative Centrifugal Force	1080xg	3286xg	1080/3286xg
Max Rotation Speed	4000rpm±5%	7000rpm±5%	4000/7000rpm±5%
Rotor Capacity	0.2/0.5/1.5/2ml*12 + 0.2ml*8*4 Centrifuge tube 0.5/1.0ml*12 Micro blood tube Hematocrit rotor: 40mm*12 Capillary tube		
Power	20W	25W	25W
Voltage	AC100-240V / DC24V		

## Digital Mini Centrifuge



LCD display



Multi-rotor, more working capacity



Run smoothly, precise separation



Speed adjustable and timing

### TECHNICAL DATA

Model	MC-5Pro	MC-7Pro
Control Mode	Digital display & Button	
Display	LCD display	
Max Relative Centrifugal Force	1680xg	3286xg
Max Rotation Speed	5000rpm±5%	7000rpm±5%
Rotor Capacity	0.2/0.5/1.5/2ml*12 + 0.2ml*8*4 Centrifuge tube 0.5/1.0ml*12 Micro blood tube Hematocrit rotor: 40mm*12 Capillary tube	
Timing	10sec-99min	
Power	25W	

## High Speed Centrifuge



Program memory



Stable rotation



Temperature protection function



Multi-rotor, more working capacity

### TECHNICAL DATA

Model	MC-10Pro	MC-12Pro
Control Mode	Digital display & Button	
Max Relative Centrifugal Force	6708xg	9660xg
Speed Range	1000-10000rpm±5%	1000-12000rpm±5%
Rotor Capacity	0.2/0.5/1.5/2ml*12 + 0.2ml*8*4 Centrifuge tube 0.5/1.0ml*12 Micro blood tube Hematocrit rotor: 40mm*12 Capillary tube	
Max Speed Acceleration / Reduction	≤12 s/≤15s	
Noise Under Max Rotation Speed	≤47db (A)	
Input Power	48W	
Shell Protection Level	AC100-240V / DC24V	
Allow Surrounding Temperature	5 - 40 C / 80%RH	



## High Speed Centrifuge



Program memory



Stable rotation



Temperature protection function



Enclosed high-speed type rotor

### TECHNICAL DATA

Model	MC-13Pro	MC-15Pro
Control Mode	Digital display & Button	
Max Relative Centrifugal Force	11337xg	14104xg
Speed Range	1000-13000rpm±5%	1000-14500rpm±5%
Rotor Capacity	0.2/0.5/1.5/2ml*12 Centrifuge tube 0.5/1.0ml*12 Micro blood tube	
Max Speed Acceleration / Reduction	≤12 s/ ≤15s	
Noise Under Max Rotation Speed	≤47db (A)	
Input Power	50W	55W
Shell Protection Level	AC100-240V / DC24V	
Allow Surrounding Temperature	5 - 40℃ / 80%RH	

## Low Speed Centrifuge



Program memory



Multi rotors optional



Temperature protection & overshock protection



Double electronic lock

### TECHNICAL DATA

Model	LC500-8	LC500-12	LC500-6	LC500-18	LC500-24
Rotor Capacity	15ml*8 Centrifuge tube 2/5/10ml*8 Blood tube	15ml*12 Centrifuge tube 2/5/10ml*12 Blood tube	15/50ml*6 Centrifuge tube 2/5/10ml*6 Blood tube	2/5/10ml*18 Blood tube	2/5/10ml*24 Blood tube
Speed	500 - 4000rpm				
Max RCF	1967xg	2075xg	2146xg	2182xg	2164xg
Semidiameter Of Rotor	11cm	11.6cm	12cm	12.2cm	12.1cm
Timing Range	30s - 59min50s				
Protection Function	Lid opening protection, cavity overtemperature protection, vibration projection				
Power	60W	60W	80W	80W	80W
Power Supply	AC 110V - 220V, 50/60Hz				

## Low Speed Centrifuge



LCD display



Electronic door lock



Emergency switches for easier use



Program memory

### TECHNICAL DATA

Model	LC400
Speed Range	500-4500rpm
Max Relative Centrifuge Force	2180xg
Rotor Capacity	15ml*4 Centrifuge tube 2/5/10ml*8 Blood tube
Increment	100rpm
Timing Range	30s ~ 59min50s
Noise	≤ 60dB(A)
Voltage	AC220V
Power	40W
Dimensions (mm)	265*260*190

# MICROPLATE CENTRIFUGE

---



## Microplate Centrifuge



LCD display



Rotor for microplate,  
more working capacity



Brushless motor with strong power



Speed adjustable and timing

### TECHNICAL DATA

Model	LC500 - MP
Max Capacity	96-well PCR microplate * 4
Speed Range	500 - 2000 rpm
Max RCF	500xg
Semidiameter Of Rotor	10.2cm
Protection Function	Lid opening protection, cavity overtemperature protection, vibration protection
Timing	30s - 59min50s
Power	50W
Power Supply	AC 110V - 220V 50/60Hz

# STIRRER

---



## Mini Magnetic Stirrer



Strong magnetic field



Large mixing ability



Durable brushless motor



LCD display

### TECHNICAL DATA

Model	MS3	MS5	MS5S
LCD Display	No	No	Yes
Control	Knob	Knob	Knob
Motor Type	Brushless motor		
Working Plate Size (mm)	125	135	135
Speed Range	200-1800rpm	350-1800rpm	200-2000rpm
Max Stirring Volume	1L(H <sub>2</sub> O)	2L(H <sub>2</sub> O)	2L(H <sub>2</sub> O)
Stir Bar Size (mm)	30	30	30
Power	3W	5W	5W
Shell Protection Level	IP42		
Voltage	100-240V 50/60Hz		

## Heating Magnetic Stirrer



Strong magnetic field



Stainless steel ceramic  
coated countertops

### TECHNICAL DATA

Model	HS-5
Control Mode	Brushless motor
Max Stirring Volume	2L(H <sub>2</sub> O)
RPM	200-1500rpm
Timing Range	/
Control Mode	Knob
Working Plate (mm)	Φ135
Plate Temp.	260°C
Allowable Ambient Temp	5~40°C 80%RH
Power	200W
Product Size (mm)	225*155*90



## Digital Display Hotplate Stirrer



Strong magnetic field



Stainless steel ceramic coated countertops

### TECHNICAL DATA

Model	HS-5C	HS-5Pro
Control Mode	Brushless motor	Brushless motor
Max Stirring Volume	2L(H <sub>2</sub> O)	2L(H <sub>2</sub> O)
RPM	200-1500rpm	50-1500rpm
Timing Range	/	1min-12h
Control Mode	Digital display & Knob	Digital display & Button
Working Plate (mm)	Φ135	Φ135
Plate Temp.	280°C	310°C
Liquid/Plate Temp Accuracy	±1°C/±3°C	±1°C/±3°C
Power	300W	400W
Product Size (mm)	225*155*90	225*155*90

## Digital Display Hotplate Stirrer



Strong magnetic field



Stainless steel ceramic coated countertops

### TECHNICAL DATA

Model	HS-8Pro
Control Mode	Brushless motor
Max Stirring Volume	5L(H <sub>2</sub> O)
RPM	50-1500rpm
Timing Range	1min - 12h
Control Mode	Digital display & Knob & Button
Working Plate (mm)	Square Plate160*160mm
Plate Temp.	310°C
Allowable Ambient Temp	5~40°C 80%RH
Power	500W
Product Size (mm)	285*180*90

# Large Capacity Magnetic Stirrer



Timing function



Knob operation



Forward and reverse

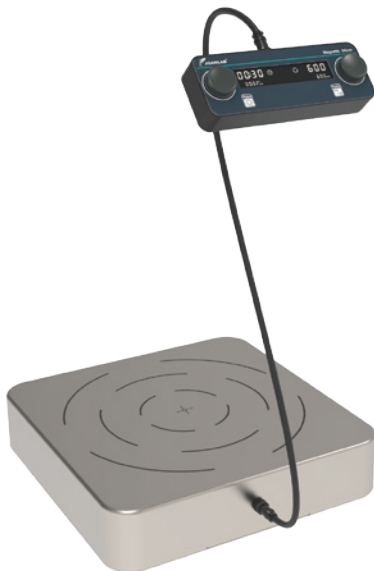


Large capacity

## TECHNICAL DATA

Model	MS-5L	MS-10L	MS-15L	MS-30L	MS-50L
Control Mode	Display & Knob				
Display Method	LCD display				
Power	10W	20W	20W	30W	50W
Working Plate (mm)	180*180	220*220	220*220	260*260	330*330
Max Stirring Volume	5L	10L	15L	30L	50L
Speed Range	50-1500rpm	50-1500rpm	50-1500rpm	50-1300rpm	50-1100rpm
Speed Regulation Accuracy	5rpm	5rpm	5rpm	5rpm	5rpm
Timing Range	1min-23h59min				
Stir Bar Size (mm)	40	50	60	80	100
Product Size (mm)	280*180*65	315*220*65	315*220*65	350*260*85	435*330*85

## Large Capacity Magnetic Stirrer



Forward and reverse



Extra large stirring capacity



Timing function



Knob operation

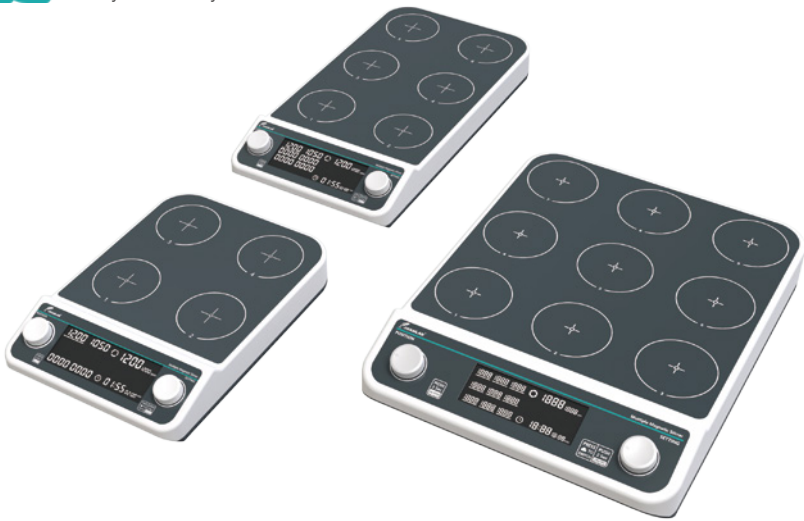
### TECHNICAL DATA

Model	MS-100L
Control Mode	Digital display & Knob
Display Method	LCD display
Power	120W
Working Plate	400*400mm
Max Stirring Volume	100L
Speed Range	100-600rpm
Speed Regulation Accuracy	5rpm
Timing Range	1min-24h
Stir Bar Size	160mm

## Multiple Magnetic Stirrer



Can be set to run synchronously or asynchronously



Timing function



Stepless speed regulation,  
wide speed range



LCD display



Durable brushless motor

### TECHNICAL DATA

Model	MMS4Pro	MMS6Pro	MMS9Pro
Control	Asynchronous control		
Number Of Stirring Points	4	6	9
Max Capacity	4*500ml	6*500ml	9*500ml
Working Plate Size	4-(110*110mm)	6-(110*110mm)	9-(110*110mm)
Motor	Brushless motor		
Speed	50-1500rpm		
Bar Size (mm)	Z30		
Timing	1min-19h59min		
Voltage	AC100-240V		

## Multiple Magnetic Stirrer with Heating



Can be set to run synchronously or asynchronously



LCD display



304 stainless steel plate, corrosion resistant



Heat more uniformly



Durable brushless motor

### TECHNICAL DATA

Model	MHS4Pro	MHS6Pro
Control	Asynchronous control	
Number Of Stirring Points	4	6
Max Capacity	4*500ml	6*500ml
Working Plate Size	4-(110*110mm)	6-(110*110mm)
RPM	50-1200 rpm	
Plate Material	304 Stainless steel	
Plate Temperature	120°C	
Timing	1min-19h59min	
Bar Size (mm)	Z30	Z30
Power	240W	360W
Voltage	AC 220V	

## Overhead Stirrer



Smooth start



DC permanent magnet motor



Adjustable speed



Powerful

### TECHNICAL DATA

Model	OS-5	OS-10	OS-15S	OS-30S
Motor	Brushed motor		Brushless motor	
Max Amount Of Stirring	5L	10L	10L	20L
Range Of Rotate Speed	200-1500rpm	100 - 1000rpm	100 - 2000rpm	50 - 1200rpm
Timing	/	/	1min-23h59min	1min-23h59min
Max Torque	10N.cm	20N.cm	15N.cm	30N.cm
Max Viscosity	5000mPas	10000mPas	8000mPas	16000mPas
Drill Chuck Diameter	1-10mm	1-10mm	1-10mm	1-10mm
Power	20W	25W	30W	36W
Voltage	AC100-240V			

# DRY BATH

---





## Mini Dry Bath



Small volume



Multi-point operation



LCD display



Overtemperature protection

## TECHNICAL DATA

Model	MDB100C	MDB100
Temperature Range	Room temp - 15°C ~ 100°C	Room temp + 5°C ~ 100°C
Temperature Stability	±0.5°C	±0.5°C
Temperature Homogeneity	±0.5°C	±0.5°C
Display Accuracy	0.1°C	0.1°C
Heating Time	≤12min (25-100°C)	≤12min (25-100°C)
Cooling Time	20 - 25 min (20-0°C)	/
Multi-point Operation	Yes	No
Temperature Point Can Be Set	9	9
Time Setting Range	5s - 23h59min	5s - 23h59min
Power	60W	48W
Voltage	AC100-240V	AC100-240V
Size	160*115*96 mm	160*115*96 mm

### Module Options

### Numbers And Aperture Of Test Tube

MDB1	40 * 0.2ml Centrifuge tube
MDB2	24 * 0.5ml Centrifuge tube
MDB3	15 * 1.5ml Centrifuge tube
MDB4	15 * 2.0ml Centrifuge tube
OEM Of Modules	Modules can be customized according to customer needs

# Dry Bath



LCD display



Multi-point operation



Overtemperature protection



Multipoint temperature operation

## TECHNICAL DATA

Model	DB100C	DB100
Temperature Range	Room temp - 15°C ~ 100°C	Room temp + 5°C ~ 100°C
Temperature Stability	±0.5°C	±0.5°C
Temperature Homogeneity	±0.5°C	±0.5°C
Display Accuracy	0.1°C	0.1°C
Heating Time	≤12min (25-100°C)	≤12min (25-100°C)
Cooling Time	20 - 25 min (20-0°C)	/
Multi-point Operation	Yes	No
Temperature Point Can Be Set	9	9
Time Setting Range	5s--23h59min	5s--23h59min
Power	96W	96W
Voltage	AC100-240V	AC100-240V
Size	170*160*102 mm	170*160*102 mm

Module Options	Numbers And Aperture Of Test Tube
DB1	96 * 0.2ml Centrifuge tube
DB2	48 * 0.5ml Centrifuge tube
DB3	35 * 1.5ml Centrifuge tube
DB4	35 * 2.0ml Centrifuge tube
DB5	24 * 5.0ml Blood tube
DB6	12 * 5 / 15ml Centrifuge tube
DB7	6 * 50ml Centrifuge tube
DB8	Flat bottom plate (ELISA plate/culture plate, etc.) (Non-replaceable modules)
DB9	Cuvettes dedicated module
DB10	Aluminum beads (Non-replaceable modules)
OEM Of Modules	Modules can be customized according to customer needs

## Dry Bath - Two Modules



LCD display



Programme memory,  
9 temperature points



Overtemperature protection



Two modules, freely combined

## TECHNICAL DATA

Model	DB100-2P
Temperature Range	Room temp + 5°C ~ 100°C
Temperature Stability	±0.5°C
Temperature Homogeneity	±0.5°C
Display Accuracy	0.1°C
Heating Time	≤12min (25-100°C)
Cooling Time	(110*75*32 mm) * 2
Multi-point Operation	No
Temperature Point Can Be Set	9
Time Setting Range	5s--23h59min
Power	200W
Voltage	AC100-240V
Size	280*180*85 mm

Module Options	Numbers And Aperture Of Test Tube
DB1	96 * 0.2ml Centrifuge tube
DB2	48 * 0.5ml Centrifuge tube
DB3	35 * 1.5ml Centrifuge tube
DB4	35 * 2.0ml Centrifuge tube
DB5	24 * 5.0ml Blood tube
DB6	12 * 5 / 15ml Centrifuge tube
DB7	6 * 50ml Centrifuge tube
DB8	Flat bottom plate (ELISA plate/culture plate, etc.) (Non-replaceable modules)
DB9	Cuvettes dedicated module
DB10	Aluminum beads (Non-replaceable modules)
OEM Of Modules	Modules can be customized according to customer needs

# Dry Bath Shaking Incubator



LCD display



Multi-point operation



Overtemperature protection



Multipoint temperature operation

### TECHNICAL DATA

Model	DBS100C	DBS100
Temperature Range	0°C ~ 100°C	15°C ~ 100°C
Temperature Stability	±0.5°C	±0.5°C
Display Accuracy	0.1°C	0.1°C
Heating Rate	5.5°C/min	5.5°C/min
Cooling Rate	2.5°C/min(100 C -Room temperature) 0.5°C/min(Below room temperature)	/
Speed / Timing	200-1500rpm / 1s-23h59min	
Mixing Diameter	3mm	
Program Memory	9 grades	
Power	200W	
Voltage	100-240V 50/60HZ	
Size	200*235*120mm	

#### Module Options

#### Numbers And Aperture Of Test Tube

DBS1	0.2ml *96 Centrifuge tube
DBS2	1.5ml *24 Centrifuge tube
DBS3	2ml *24 Centrifuge tube
DBS4	15ml *8 Centrifuge tube
DBS5	50ml *4 Centrifuge tube

OEM Of Modules

Modules can be customized according to customer needs



# WATER BATH

---



## Water Bath With Magnetic Stirrer



PID temperature control



Brushless Motor



Stainless steel inner tank



Strong Stirring Power

### TECHNICAL DATA

Model	WB-6S	WBS-6Pro
Speed / Increment	/	100-1200RPM / 50RPM
Temperature Range	Room Temp. +5°C-100°C	Room Temp. +5°C-100°C
Liner Size	200*200*130mm(depth)-2L flask or 3L beaker	
Product Size (mm)	260*265*325	260*265*325
Display Accuracy	0.1°C	0.1°C
Power	800W	800W
Timing Range	1min-23h59min	1min-23h59min

## Water Bath



Digital display thermostatic



High precise temperature control



One-piece stainless steel tank



High corrosion resistance

### TECHNICAL DATA

Model	WB100-1 WB100-1F	WB100-2 WB100-2F	WB100-4 WB100-4F	WB100-6 WB100-6F	WB100-8F
Temperature Range	Room temp- 100°C				
Power	300W	600W	800W	1200W	1500W
Accuracy	±0.1°C				
Working Chamber Size (mm)	160*160*130	300*150*140	300*300*140	450*300*130	620*300*120

\* WB100-F series are anti-dry series

# HEATING MANTLE

---



## Heating Mantle



Intelligent temperature control



Heating evenly, heating up fast

### TECHNICAL DATA

Model	HM		HMC		HMS			HMSC	
Capacity	100ml	250ml	500ml	1L	2L	3L	5L	10L	20L
Function	Heating		Heating		Heating/magnetic stirrer			Heating/magnetic stirrer	
Heating Power	100W	150W	250W	350W	450W	600W	800W	1200W	2400W
Temperature Control	/		Digital temperature control			/		Digital temperature control	
Max Temperature	Room temp - 380°C		Room temp - 300°C		Room temp - 380°C			Room temp - 300°C	

# INFRARED STERILIZER

---



## Infrared Sterilizer



Sterilization only takes  
5-7 seconds



Can be used in an anaerobic  
environment



No open-flame, more safe



Easy to clean

### TECHNICAL DATA

Model	DS-900	DS-900S
Power	150W	240W
Max. Temperature Inside The Heating Hole	825°C±50°C	
Heating Temperature	Two temperatures available 400°C/850°C	
Max. Diameter Of Sterilizer Goods (mm)	φ14	φ35
Length Of Heating Zone (mm)	150	100
Warm-up Time	10min	

# PIPETTE

---





## Electric Pipette



Dynamic drainage + Gravity drainage



Membrane protection



6 levels adjustable pipetting speed



LCD display

### TECHNICAL DATA

Model	EP100Pro
Range	0.1-100ml
Suction Speed	25ml < 5s ( 6 speeds adjustable )
Drain Mode	Dynamic drainage + Gravity drainage
Battery Life	Could work intermittently for about 8 hours
Type Of Pipette	Plastic or glass pipette (0.1-100ml); Pasteur pipettes
Filter Membrane	0.45µm hydrophobic filter membrane
Weight	180g

## Liquid Vacuum Aspiration System



Work for multi purpose



Digital display speed control knob



9-speed speed regulation



High temperature disinfection

### TECHNICAL DATA

Model	VP-6Pro	Fluid Absorption Rate	1.6L / Min
Type	Negative pressure suction	Ultimate Vacuum	0.06Mpa
Control Type	Digital display knob · 9 speeds	Diameter Of Collection Bottle	93mm
Pumping Rate	6L / Min	Power	10W

## Bottle Top Dispenser



Digital window



Gear adjustment



Acid and alkali resistant



Safety valve protection



Various models

### TECHNICAL DATA

Model	Capacity Range	Increment	Test Capacity	Systemic Error	Random Error	Repeat Error
DA-2ML	0.4-2ml	0.05	1ml	10ul	10ul	2ul
DA-5ML	1-5ml	0.1	2.5ml	25ul	25ul	5ul
DA-10ML	2-10ml	0.25	5ml	50ul	50ul	10ul
DA-30ML	5-30ml	0.5	15ml	125ul	125ul	25ul
DA-60ML	10-60ml	1	30ml	250ul	250ul	50ul

## M Series Micropipette



Wide range



Dispense accurately



### TECHNICAL DATA

Model	Capacity Range	Test Capacity	Tip	Increment	Accuracy Error	Repeat Error
M2.5	0.1 - 2.5ul	1.25	10ul	0.05ul	±3.00%	±3.00%
M10	0.5 - 10ul	5	10ul	0.1ul	±1.50%	±0.80%
M20	2 - 20ul	10	200ul	0.5ul	±1.20%	±0.40%
M50	5 - 50ul	25	200ul	0.5ul	±0.90%	±0.30%
M100	10 - 100ul	50	200ul	1ul	±1.00%	±0.15%
M200	20 - 200ul	100	200ul	1ul	±0.70%	±0.15%
M1000	100 - 1000ul	500	1000ul	5ul	±0.80%	±0.20%
M5000	1000 - 5000ul	2500	5000ul	50ul	±0.60%	±0.15%
M10000	2 - 10ml	5ml	10ml	0.1ml	±1.20%	±0.20%

## P Series Whole Autoclavable Micropipette



121°C sterilization



Wide range



Dispense accurately

### TECHNICAL DATA

Model	Capacity Range	Test Capacity	Tip	Increment	Accuracy Error	Repeat Error
P10	0.5 - 10ul	5ul	10ul	0.1ul	±1.00%	±1.00%
P20	2 - 20ul	10ul	200ul	0.5ul	±1.00%	±1.00%
P50	5 - 50ul	25ul	200ul	0.5ul	±0.90%	±0.60%
P100	10 - 100ul	50ul	200ul	1ul	±1.00%	±0.40%
P200	20 - 200ul	100ul	200ul	1ul	±0.80%	±0.30%
P1000	100 - 1000ul	500ul	1000ul	5ul	±0.70%	±0.25%
P5000	1000 - 5000ul	2500ul	5000ul	50ul	±0.60%	±0.30%
P10000	2 - 10ml	5ml	10ml	0.1ml	±1.20%	±0.30%

## Multichannel Pipette



Digital window



8/12 channels optional



Suitable for 96-well plates



The tip can rotate 360 degrees



### TECHNICAL DATA

Model	Type	Capacity Range	Tip	Increment	Test Capacity	Allow Maximum Error
M8 - 10	8 channels	0.5 - 10ul	10ul	0.1ul	5	2.50% 0.125
M8 - 50	8 channels	5 - 50ul	200ul	0.5ul	25	1.50% 0.375
M8 - 300	8 channels	50 - 300ul	300ul	5ul	150	1.00% 1.500
M12 - 10	12 channels	0.5 - 10ul	10ul	0.1ul	5	2.50% 0.125
M12 - 50	12 channels	5 - 50ul	200ul	0.5ul	25	1.50% 0.375
M12 - 300	12 channels	50 - 300ul	300ul	5ul	150	1.00% 1.500

# VACUUM PUMP

---



## Oiless Diaphragm Vacuum Pump



Oil-free and no pollution



Illuminated switch



Overload,overheat and short circuit protection



High precision vacuum gauge

### TECHNICAL DATA

Model	VP-10L	VP-15L
Type	Negative pressure	
Suction Flow Rate	10L/min	15L/min
Limit Vacuum Degree	0.075Mpa	0.08Mpa
Noise	<40db	<45db
Enclosure Ratings	IP21	
Power Supply	20W	30W
Diaphragm	Rubber	
Protection Devices	Overload protection, over temperature protection, short circuit protection	
Gross/Net Weight	1.95/1.58 kg	



## Adjustable Speed Oil-free Diaphragm Vacuum Pump



The suction speed is adjustable



Illuminated switch



Overload, overheat and short circuit protection

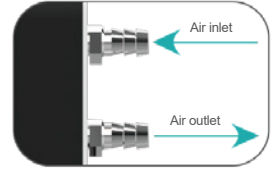


High precision vacuum gauge

### TECHNICAL DATA

Model	VP-15S
Type	Negative pressure
Suction Flow Rate	0-15 L/min
Limit Vacuum Degree	0.08Mpa
Noise	< 45db
Enclosure Ratings	IP21
Power Supply	30W
Diaphragm	Rubber
Protection Devices	Overload protection, over temperature protection, short circuit protection
Gross/Net Weight	1.95/1.58 kg

## Oilless Diaphragm Vacuum Pump - 30L



Positive and negative pressure



Illuminated switch



Overload, overheat and short circuit protection



High precision vacuum gauge

### TECHNICAL DATA

Model	VP-30L
Type	Positive and negative pressure
Suction Flow Rate	30 L/min
Limit Vacuum Degree	0.085Mpa
Greatest Pressure	5.0bar
Noise	< 50db
Enclosure Ratings	IP21
Power Supply	50W
Diaphragm	Rubber
Protection Devices	Overload protection, over temperature protection, short circuit protection

## 6L Mini Vacuum Pump



9-speed speed regulation



Digital display speed control knob



Mini portable, strong power



Steady motion

### TECHNICAL DATA

Model	VP-6L	Pumping Rate	6L / Min
Type	Negative pressure suction	Ultimate Vacuum	0.06Mpa
Control Type	Digital display knob · 9 speeds	Power	10W

## Vacuum Filtration Apparatus



### TECHNICAL DATA

Receiving Flask	Sand Core Diameter	Sand Core Aperture
250ml	20mm	10um
500ml	40mm	10um
1000ml	40mm	10um
2000ml	40mm	10um
5000ml	40mm	30-50um
10000ml	40mm	30-50um



Boro 3.3



Tight sealing



Suitable for bottles with GL-45



Large diameter·Fast suction



### TECHNICAL DATA

Receiving Flask	Sand Core Diameter	Filter Membrane	Sand Core Aperture
2000ml	80mm	90-100mm	10um
5000ml	80mm	90-100mm	10um
10000ml	80mm	90-100mm	10um

# BALANCE

---



## Square Pan Balance



Counting



Unit conversion


### TECHNICAL DATA

Model	JNB50001	JNB100001	JNB150001	JNB200001
Max Capacity	5000g	10000g	15000g	20000g
Accuracy	0.1g	0.1g	0.1g	0.1g
Pan Size (mm)	170*190			
Dimensions (mm)	280*200*80			

## Round Pan Balance



**PCS** Counting

 Unit conversion

### TECHNICAL DATA

Model	Max Capacity	Accuracy	Pan Size(mm)	Dimensions(mm)
JNB2001	200g	0.1g	110	280*200*160
JNB5001	500g	0.1g	130	280*200*160
JNB10001	1000g	0.1g	130	280*200*160
JNB20001	2000g	0.1g	150	280*200*160
JNB30001	3000g	0.1g	150	280*200*160
JNB1002	100g	0.01g	110	280*200*160
JNB5002	500g	0.01g	130	280*200*160
JNB10002	1000g	0.01g	130	280*200*160
JNB20002	2000g	0.01g	150	280*200*160
JNB30002	3000g	0.01g	150	280*200*160
JNB1003	100g	0.001g	110	280*200*160
JNB2003	200g	0.001g	110	280*200*160

## 0.001g Balance



Dual screen display



Unit conversion



Multi-device printing  
Standard RS232 interface



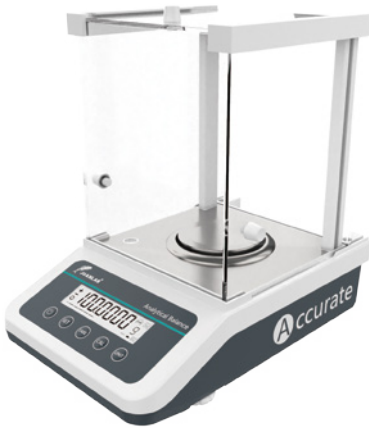
Full electromagnetic  
interference protection

### TECHNICAL DATA

Model	FA2003S	FA3003S	FA5003S
Max Capacity	200g	300g	500g
Min Readout		20mg	
Accuracy		0.001g	
Repeatability		±0.002g	
Linearity Error		±0.002g	
Stability Time		≤ 3S	
Working Temp.		15°C ~ 35°C	
Pan Size		φ120mm	
Dimensions		300*200*295 mm	
Calibration Mode		External calibration	
Communication Interface		RS232(USB interface optional)	



## Analytical Balance - FA



LED display



Unit conversion



Multi-device printing  
Standard RS232 interface



Full electromagnetic  
interference protection

### TECHNICAL DATA

Model	FA1004 FA1004N	FA1204 FA1204N	FA2004 FA2004N	FA2204 FA2204N
Max Capacity	100g	120g	200g	220g
Min Readout		0.01g		
Accuracy		0.1mg		
Repeatability		±0.0002g		
Linearity Error		±0.0003g		
Stability Time		≤ 3S		
Working Temp.		15°C ~ 35°C		
Pan Size	Standard model φ80mm / Optional model φ90mm			
Dimensions	300*200*295 mm			
Calibration Mode	Internal calibration(FA****N) / External calibration(FA****)			
Communication Interface	RS232( USB interface optional)			

\* FA-N series Internal calibration balance



# JOANLAB<sup>®</sup>

## Joan Lab Equipment (Zhejiang) Co.,Ltd.

---

☎ 0086 - 13676857721

🌐 [www.joanlab.com](http://www.joanlab.com)

✉ [mary@joanlab.com](mailto:mary@joanlab.com)

📍 Address: 181# Gangfeng Road, Kangshan Street, Wuxing District, Huzhou City, Zhejiang Province, China.

2023/06