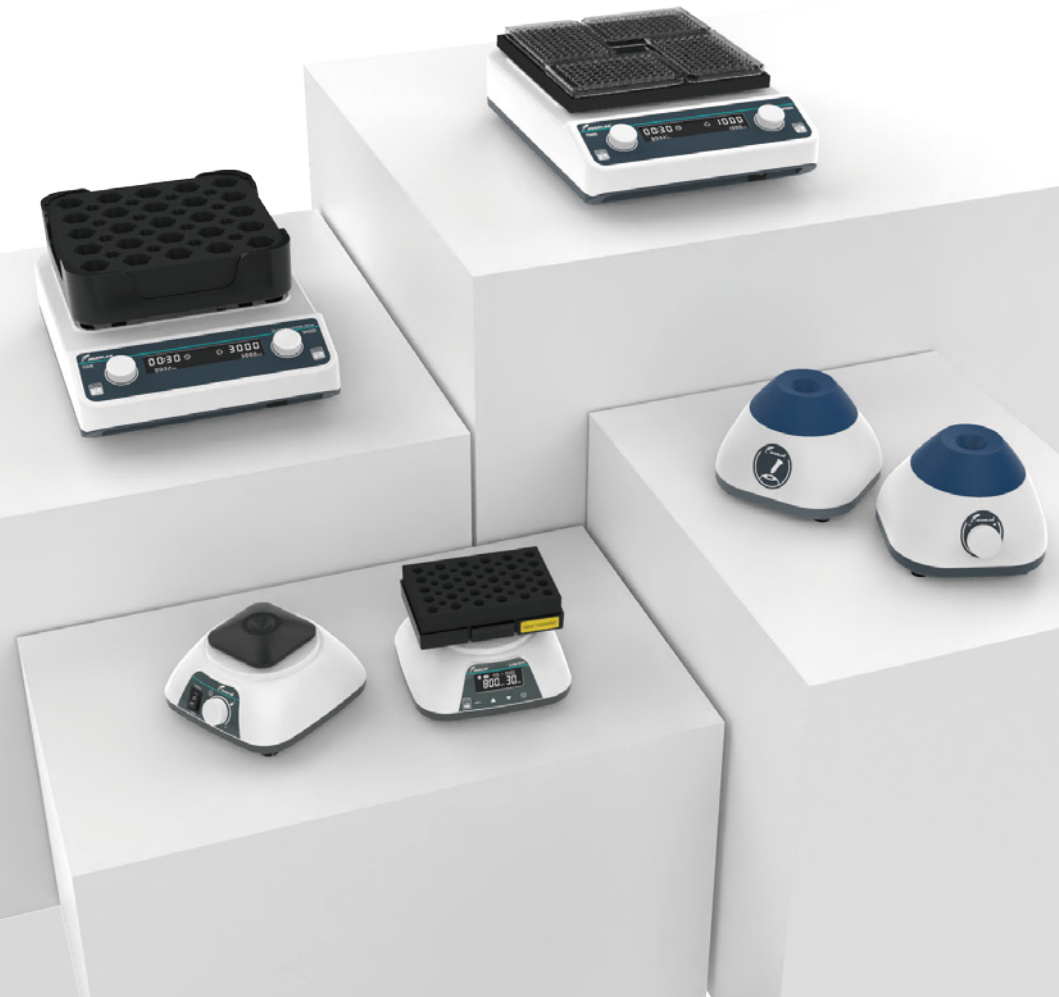
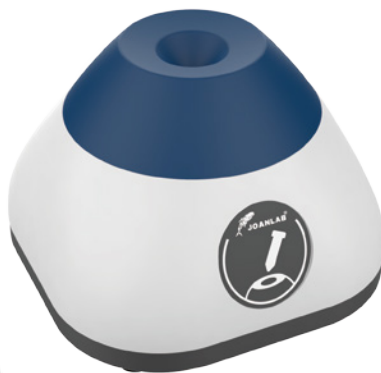


SHAKER&MIXER



Mini Vortex Mixer



Stepless speed regulation
Wide speed range



High quality and colorful
silicone



Press to start / Compact body

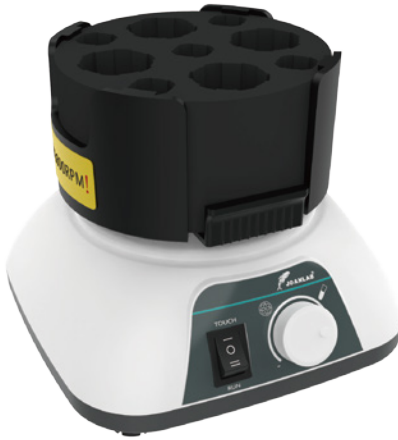


Brushless motor / Durable

TECHNICAL DATA

Model	VM-300	VM-300S	Shell Protection Level	IP42	
Control Mode	Constant speed	Knob	Power	12W	
Motor	Brushless motor		Voltage	100-240V, 50/60Hz	
Amplitude	4.5mm (Circular oscillation)		Product Size	93*93*72mm	100*93*72mm
Maximum Sample Processing Capacity	50ml		Allowable Ambient Temperature	5-40°C, 80%RH	
Speed Range	3000rpm	0-3000rpm	Gross / Net weight	0.55/0.36kg	0.56/0.37kg

Vortex Mixer With Multifunction



Ultra-low body, stable operation



Various fixtures, large handling capacity



Brushless motor with strong power



Touch / Run, easy to switch

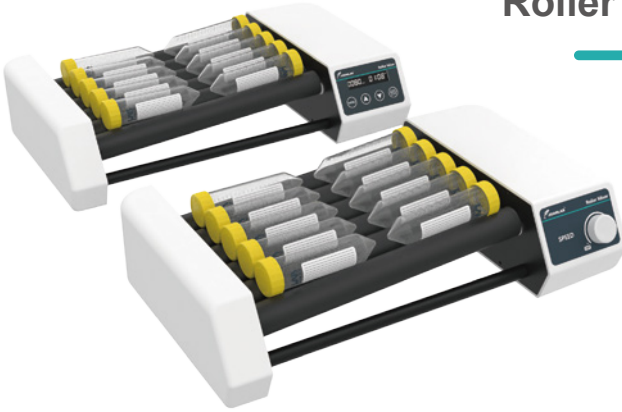
TECHNICAL DATA

Model	VM-500S	VM-500Pro	Speed Range	Touch: 0-3000rpm Run: 200-3000rpm	Touch: 0-3000rpm Run: 100-3000rpm
Operating Mode	Touch / Run		Timing / Time	No	1min - 8h
Control Mode	Knob	Digital display & Button	Shell Protection Level	IP21	
Display	No	LCD	Voltage	20W	
Motor	Brushless motor		Power	AC 100-240V / DC12V	
Amplitude	4.5mm (Circular oscillation)		Temperature	5-40 C, 80%RH	
Max Capacity	50ml*4, 15ml*9, 5/10ml*12, 2ml*24				

Multifunctional Mixer Adapted Module

Model	Picture	Image	Module application scope
VM501			Centrifuge tube / Test tube
VM502			Flask / Multi tube
VM503			Φ12mm Blood collection tube * 21
VM504			5ml/ 15ml Centrifuge tube * 12
VM505			50ml Centrifuge tube * 4 5ml/ 15ml Centrifuge tube * 5
VM506			0.2ml Centrifuge tube * 96 96 well plate
VM507			0.5ml Centrifuge tube * 20 1.5 / 2.0ml Centrifuge tube * 30
VM508			Cell culture plate

Roller Mixer



Timing function



Anti - lock design, more convenient



Adjustable speed

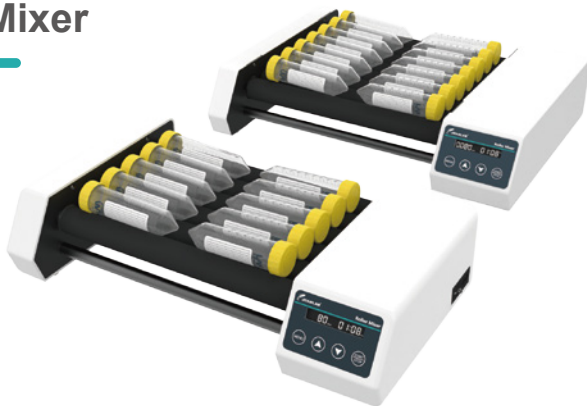


Brushless motor with strong power

TECHNICAL DATA

Model	RM-6	RM-6Pro	RM-8Pro
Motor Type	Brush motor	Brushless motor	Brushless motor
Display	/	LCD	LCD
Speed	20 - 80rpm		
Number Of Rollers	6	6	8
Roller Length (mm)	280		
Roller Center Distance (mm)	34		
SPECS	φ 6 - 34mm		
Timing	/	1min - 23h59min	1min - 23h59min
Allowed Ambient Humidity Temp.	5 ~ 40 C 80%RH		
Voltage	AC 100 - 220V, 50/60Hz		
Power	25W		
Dimension (mm)	440*255*105	440*255*105	430*320*100

Roller Mixer



Timing function



Anti - lock design, more convenient



Adjustable speed

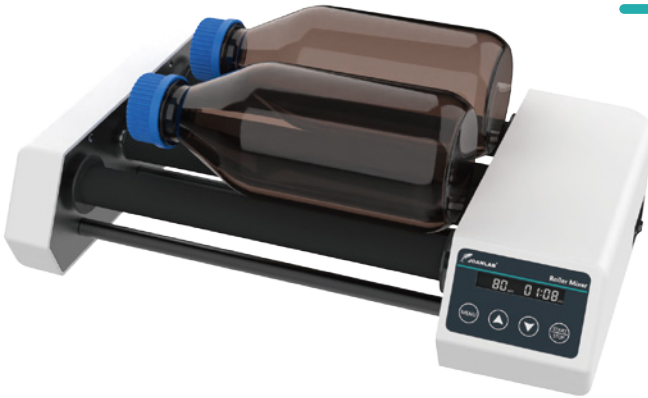


Brushless motor with strong power

TECHNICAL DATA

Model	RM-6H	RM-8H
Motor Type	Brushless motor	
Display	LCD	
Type	Horizontal rolling	
Speed	20 - 80rpm	
Number Of Rollers	6	8
Roller Length (mm)	280	
Roller Center Distance (mm)	34	
SPECS	φ 6 - 34mm	
Timing	1min - 23h59min	
Allowed Ambient Humidity Temp.	5 ~ 40 C 80%RH	
Voltage	AC 100 - 220V, 50/60Hz	
Power	25W	
Dimension (mm)	440*255*105	430*320*100

Roller Mixer



Timing function



Anti - lock design, more convenient



Adjustable speed



Brushless motor with strong power

TECHNICAL DATA

Model	RM-4max
Motor Type	Brushless motor
Type	Horizontal rolling
Speed	20 - 80rpm
Number Of Rollers	4
Roller Length (mm)	280
Roller Center Distance (mm)	68
SPECS	φ 45 - 100mm
Timing	1min - 23h59min
Allowed Ambient Humidity Temp.	5 ~ 40 C 80%RH
Voltage	AC 100 - 220V, 50/60Hz
Power	25W
Dimension (mm)	440*255*105

Long Axis Rotating Mixer Shaker



Timing function



Six different modules

TECHNICAL DATA

Model	RML - 80	RML - 80Pro
Motor	Brush motor	Brushless motor
Control Mode	Knob	Digital display & Button
Type	Non-stop run	Non-stop run / Timing
Speed	20 - 80rpm	
Timing	/	1min - 23h59min
Power	25W	
Dimension (mm)	425*100*125	

MODULES



Composite module

Centrifuge tube : 50ml*4+15ml*10+2ml*8
 Blood collection tube : 10ml*10+2/5ml*8



RML-801

Centrifuge tube : 50ml*12



RML-802

Centrifuge tube : 15ml*23
 Blood collection tube : 10ml*23



RML-803

Centrifuge tube : 1.5/2.0ml*28
 Blood collection tube : 2.0/5.0ml*28



RML-804

Centrifuge tube : 15ml*16
 Blood collection tube : 10ml*16



RML-805

Centrifuge tube : 50ml*12

Rotary Rotating Mixer Shaker



Timing function



Large handling capacity



Adjustable angle



Brushless motor with strong power

TECHNICAL DATA

Model	RMO - 80	RMO - 80Pro
Motor	Brush motor	Brushless motor
Control Mode	Knob	Digital display & Button
Type	Non-stop run	Non-stop run / Timing
Speed	20 - 80rpm	
Angle Range	40° - 80°	
SPECS	Centrifuge tube : 50ml*8 or 15ml*6 or 1.5ml/2ml*24 Blood collection tube : 10ml*6 or 2ml/5ml*24	
Timing	/	1min - 23h59min
Allowed Ambient Humidity Temp.	5 ~ 40 C 80%RH	
Voltage	AC 100 - 220V, 50/60Hz	
Power	25W	
Dimension (mm)	440*255*102	

Microplate oscillator



Timing function

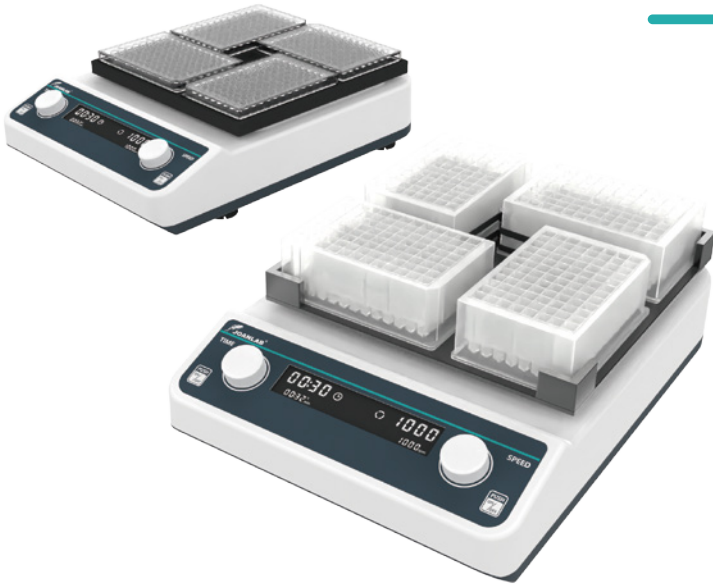


Brushless motor with strong power

TECHNICAL DATA

Model	VM - 500 - 1P	VM - 500 - 2P
Motor Type	Brushless motor	
Horizontal Gyration Amplitude	4mm	
Speed	100-1200rpm	
RPM Increment	10rpm	
Timing	1min - 8h	
Handling range	ELISA Plate / Tissue Culture Plate / 96-well plate	
Allowed Ambient Humidity Temp.	5 ~ 40 C 80%RH	
Voltage	AC 100 - 240V, 50/60Hz	
Power	20W	
Dimension (mm)	155*150*90	180*150*90

Microplate oscillator



Timing function



Brushless motor with strong power

TECHNICAL DATA

Model	VM - 600	VM - 600D
Motor Type	Brushless motor	
Horizontal Gyration Amplitude	3mm	
Speed	500 - 1200rpm	
RPM Increment	10rpm	
Timing	1min - 8h	
Handling Range	ELISA Plate/Tissue Culture Plate *4	ELISA Plate/Deep Tissue Culture Plate *4
Allowed Ambient Humidity Temp.	5 ~ 40℃ 80%RH	
Voltage	AC 110 - 220V	
Power	20W	
Dimension (mm)	355*260*95	355*260*105

Multi Tube Vortex Mixer



Timing function



Large handling capacity

TECHNICAL DATA

Model	VM - 600Max
Motor Type	Brushless motor
Horizontal Gyration Amplitude	4mm
Speed	1500 - 3000rpm
RPM Increment	10rpm
Timing	1min - 8h
Handling Range	<p>Model1(VM601) Centrifuge tube : 50ml*25+15ml*16</p> <p>Model2(VM602) Centrifuge tube : 15ml*49 / Blood tube :10ml*49</p> <p>Model3(VM603) Blood tube : 2/5ml*49</p> <p>Model4(VM604) Centrifuge tube : 1.5/2ml*81</p>
Allowed Ambient Humidity Temp.	5 ~ 40 C 80%RH
Voltage	AC 100 - 220V, 50/60Hz
Power	30W
Dimension (mm)	355*260*145

Multi Tube Vortex Mixer



Smooth start, stable operation



Large handling capacity



Brushless motor with strong power



Touch / Run, easy to switch

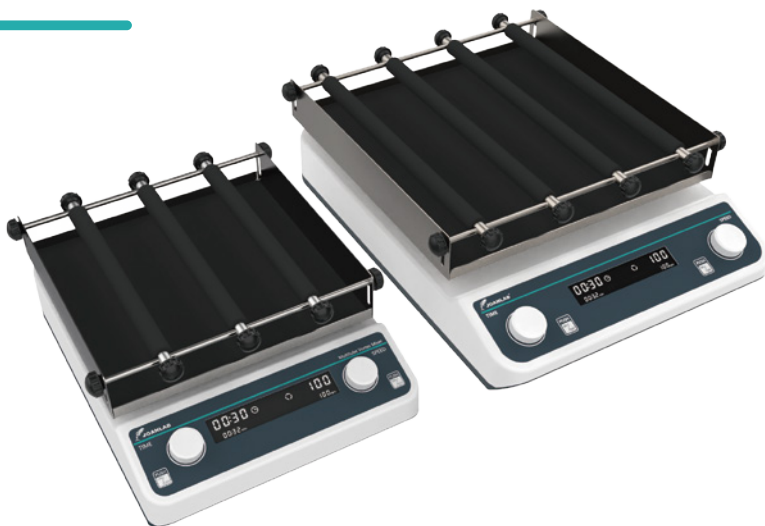
TECHNICAL DATA

Model	VM800
Operating Mode	Touch / Run
Speed Range	500 ~ 2800rpm
Amplitude	4mm Horizontal swing
Time Range	1min ~ 99h59min
Maximum Load	4.5kg
Power	100W

ADAPTATION MODULE DETAILS

Model	Specs	Model
VM801	50* ϕ 10mm	ϕ 9 ~ ϕ 10mm
VM802 (Standard)	50* ϕ 12mm	ϕ 11 ~ ϕ 13 mm (1.5/2ml centrifuge tube)
VM803 (Standard)	50* ϕ 15mm	ϕ 14 ~ ϕ 17mm (5/15ml centrifuge tube)
VM804	50* ϕ 20mm	ϕ 18 ~ ϕ 21mm
VM805	15* ϕ 25mm	ϕ 24 ~ ϕ 27mm
VM806 标配(Standard)	15* ϕ 29mm	ϕ 28 ~ ϕ 32 mm (50ml centrifuge tube)

Orbital Shaker



Adjustable speed



Timing function

TECHNICAL DATA

Model	OS-20Pro	OS-40Pro	LS-40Pro
Speed	40-200rpm		
Plate Size	250*250mm	320*320mm	320*320mm
Orbit Diameter	20mm	20mm	Linear and reciprocating 20mm
Timing Range	1min-23h59min		
Maximum Load	2kg	5kg	5kg
Voltage	AC100-240V 50/60Hz		
Dimensions	260*355*135mm	330*435*140mm	340*435*140mm

3D Oscillator Shaker



Timing function



Suitable for a variety of containers



Adjustable speed



3D mixing

TECHNICAL DATA

Model	SK - 3D
Type	3D Oscillating
Display	LCD
Tilt Angle	10°
Max Load	0.8kg
Speed	10 - 80rpm
Timing	1min - 8h
Allowed Ambient Humidity Temp.	5 ~ 40 C 80%RH
Voltage	AC 100 - 240V, 50/60Hz
Power	10W
Dimension (mm)	184*184*130